

# TC 720



Precision measuring instrument for checking the tooth geometry of circular saw blades



- + Robust and precise mechanics
- + Industrial HD color camera
- + High quality zoom lens
- + User-friendly software
- + Recording and documenting of the measurement data

# The Loroch TC 720 allows quick and precision measurement of all key data of circular saw blades, which can be saved with the relevant images, printed out and sent directly by e-mail.

With the transmitted light method, measurements are made similar to that of a conventional profile projector.

By swiveling the camera, measurements can be carried out in 3 planes and measurements can also be made using the reflected light method.

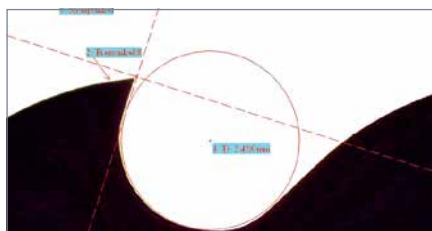
Thus the possibilities of a standard profile projector are exceeded by far.

Measurements are performed with 20x / 30x / 60x / 100x / 125x / 145x magnification.

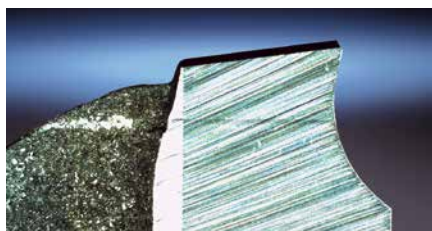
Other applications are possible such as measurements on twist drills, end mills, band saw blades and on mini frame gang saw blades.

The maximum adjustable display detail is 14 x 8 mm (w x h) within 20 times magnification.

This measuring and documentation system is configured for a saw blade diameter of approx. 40 – 860 mm.



Inspection of tooth contour



Inspection of TK or TA saw blade

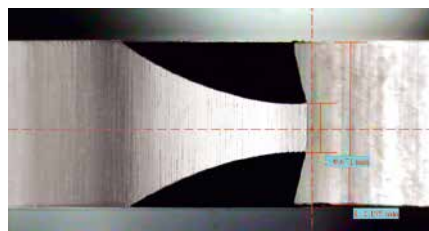
## Possible measurements:

- + Hook and clearance angle
- + Tooth height, tooth height difference, tooth pitch, tooth gullet radius, tooth back radius, etc.
- + Chamfer angle, chamfer width, chamfer length and chamfer symmetry
- + Depth and length of the chip breaker groove, space between the groove and the outside rim
- + Negative rake face angle and chip groove for carbide or cermet tipped thin-cutting saw blades (TK or TA saw blades)

In addition, a purely visual inspection can be performed to look for cracks, edge chipping, soldering problems and discoloration because of a thermal load.



Optional universal additional lighting with tripod



Inspection of chamfer-width/-symmetry



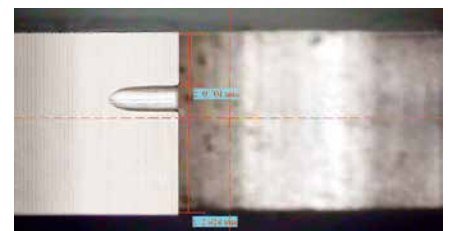
Special application band saw blade

## The TC 720 consists of:

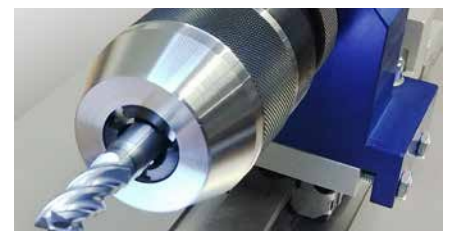
- + a mechanical adjusting device with a high-quality camera and zoom lens
- + 2 adjustable LED lights for reflected and transmitted light measurements
- + a saw blade holding fixture, which can be adjusted linearly and rotated sensitively
- + PC or notebook with pre-installed, specially designed measurement software

The following languages for the measurement software can be selected by the operator: German, English, French, Italian, Spanish and Portuguese.

The windows based image processing software is very easy to use, allowing the measured data to be saved directly in the image with accompanying notes. In addition, all measurement data is recorded in a list. Alternatively, the images can be printed out in photographic quality or sent by e-mail.



Inspection of chip breaker groove



Special application end mill

**Loroch GmbH** – Ein Unternehmen der VOLLMER Gruppe  
 Josef-Loroch-Str. 1, 69509 Mörlenbach, Germany  
 phone 49 (0)6209 7159-50, fax 49 (0)6209 7159-38  
 info@loroch.de, www.loroch.de  
 Technical changes reserved | 230404-1

More Information  
and product videos

