

TC 720



Precision measuring instrument for checking
the tooth geometry of circular saw blades & circular knives



- + Robust and precise mechanics
- + Industrial HD color camera
- + High quality zoom lens
- + User-friendly software
- + Recording and documenting of the measurement data

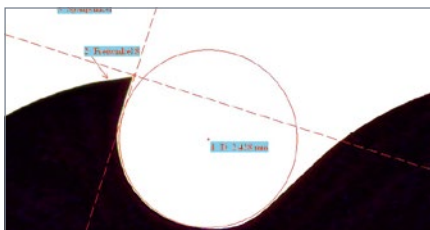
The Loroach TC 720, with the new Loroach Tool Inspector measuring software, allows quick and precision measurement of all key data of circular saw blades & circular knives.

Possible measurements:

- + Hook and clearance angle
- + Tooth height, tooth height difference, tooth pitch, tooth gullet radius, tooth back radius, etc.
- + Chamfer angle, chamfer width, chamfer length and chamfer symmetry
- + Depth and length of the chip breaker slot, space between the slot and the outside rim
- + Negative rake face angle and chip slot for carbide or cermet tipped thin-cutting saw blades (TK or TA saw blades)

By swiveling the camera, measurements can be carried out in 3 planes and measurements can also be made using the reflected light method. Thus the possibilities of a standard profile projector are exceeded by far.

Measurements are performed with 20x/30x/60x/100x/125x/145x magnification.



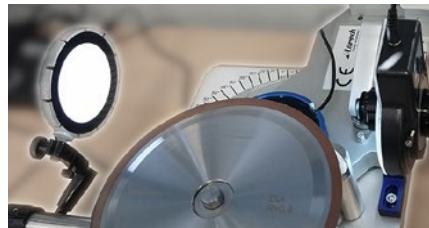
Inspection of tooth contour

The maximum adjustable display detail is 14 x 8 mm (w x h) within 20 times magnification.

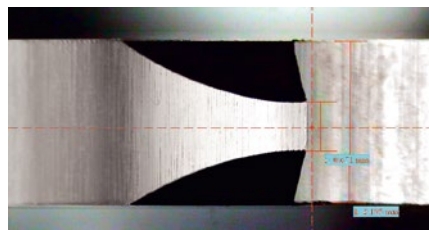
This measuring and documentation system is configured for a saw blade diameter of approx. 40 – 860 mm.

Other applications are possible such as measurements on twist drills, end mills, band saw blades and on mini frame gang saw blades.

In addition, a purely visual inspection can be performed to look for cracks, edge chipping, soldering problems and discoloration because of a thermal load.



Optional universal additional lighting with tripod



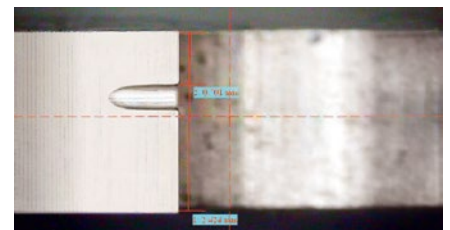
Inspection of chamfer-width/-symmetry

The Loroach TC 720 consists of:

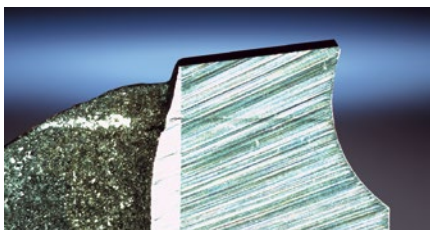
- + a mechanical adjusting device with a high-quality camera and zoom lens
- + 2 adjustable LED lights for reflected and transmitted light measurements
- + a saw blade holding fixture, which can be adjusted linearly and rotated sensitively
- + PC incl. 24" full HD monitor, keyboard and mouse, OS = Win 11 prof.
- + Loroach Tool Inspector measuring software.

With the easy-to-use Loroach Tool Inspector measuring software, creating and archiving measurement reports, even with multiple images, is quick and easy.

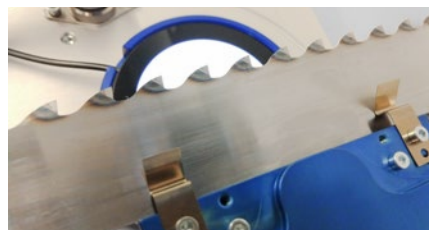
The integrated database function for your measurement objects contributes significantly to quality assurance in your company.



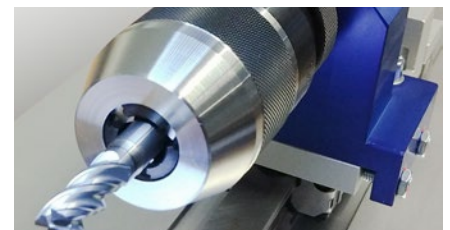
Inspection of chip breaker slot



Inspection of TK or TA saw blade



Special application band saw blade



Special application end mill

Loroach GmbH – Ein Unternehmen der VOLLMER Gruppe
Josef-Loroach-Str. 1, 69509 Mörlenbach, Germany
phone 49 (0)6209 7159-50, fax 49 (0)6209 7159-38
info@loroach.de, www.loroach.de
Technical changes reserved | 241104-1

More Information
and product videos

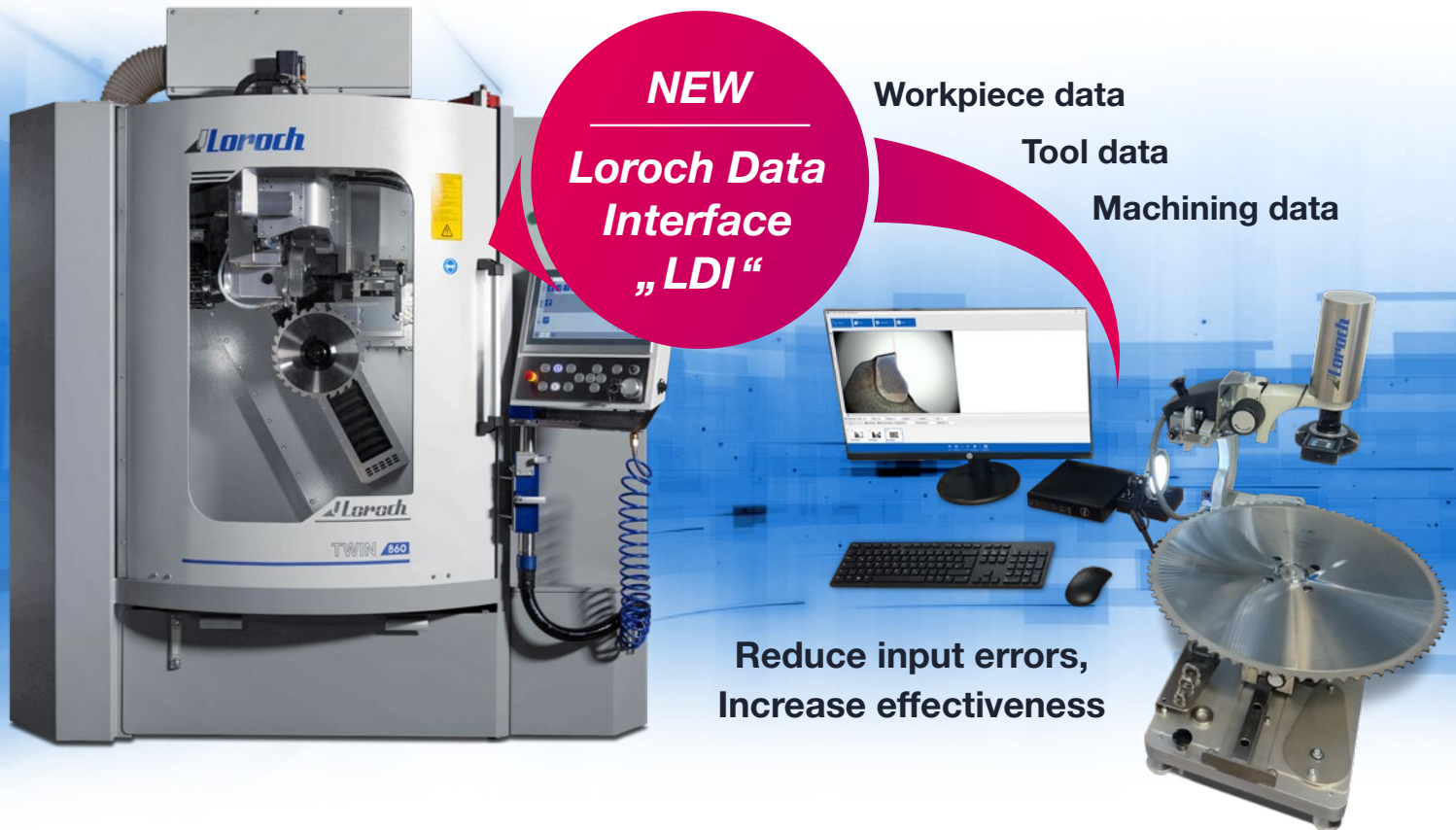
Loroach
sharp solutions!



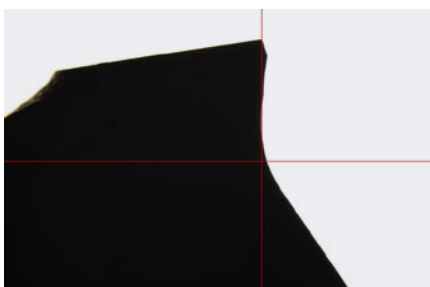
TC 720 – LDI



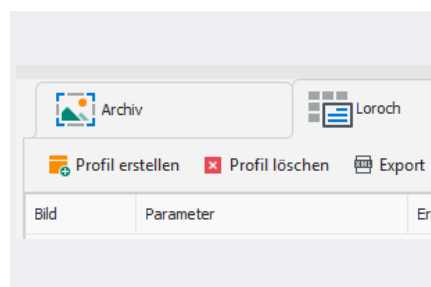
The Loroch Data Interface enables the direct transmission of the order data to the processing machine



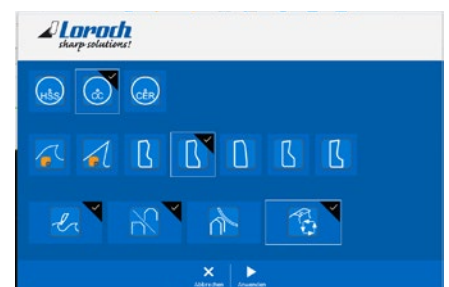
Procedure for HSS and TK saw blades



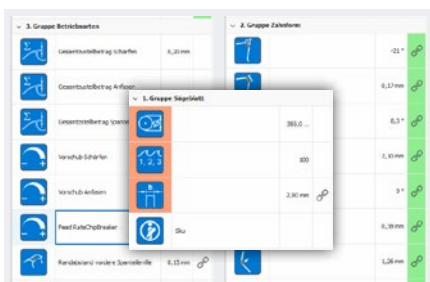
1. Take a picture



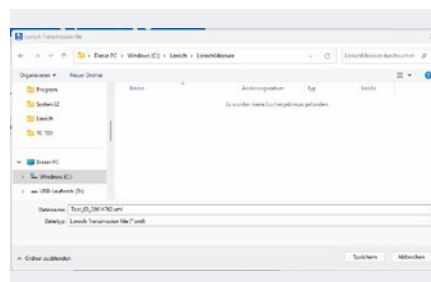
2. TC 720 – LDI tab card



3. Create profile



4. Record parameters



5. Export parameters



6. Start processing